

Dues 21-

1942	CONS.	FINES	XMAS CLUB	SIG.
Jan. 3				
" 10				
" 17				
" 24				
" 31	10-			h
Feb. 7				
" 14				
" 21				
" 28	7.6			h
Mar. 7				
" 14				
" 21	5-			h
" 28				
Apr. 4		2-	17-0	
" 11	5-			h
" 18				
" 25				
May 2	7.6			h
" 9				
" 16				
" 23	7.6			h
" 30				
June 6				
" 13	7.6			h
" 20	5-			h
" 27				

10

11

12

13

14

15

16

17

18

19

20

21

22

23

24

RULES.

1.—That the Club be known as the **Bell Hotel Thrift Club**.

2. Club Headquarters at the Bell Hotel, Amesbury.

3.—Membership of the Club shall be open to all persons (male or female) over the age of 14 years who on joining are in a normal state of good health.

4.—New members will not be accepted over the age of 55 except for thrift only.

5.—Club nights every Saturday from 6.30 to 8 p.m.; a penny fine will be imposed on every member paying after 8 p.m.

6.—Each member shall be required to contribute 6d., more if they wish, but 6d. weekly must be paid.

7.—Persons joining after the first Club night (Jan. 3rd) must pay all arrears. No one accepted after Feb. 14th.

8.—If a member's book is not clear on the last Saturday of each quarter all monies shall be forfeited except in the case of sickness, or unemployment, in which case members must give conclusive proof in writing to the Secretary.

9.—Members leaving the district may have contributions refunded upon application to the Secretary, who should, if possible, be given at least 7 days' notice.

10.—A penny fine for members using obscene language in the Club Room.

11.—Members are responsible for paying their own subscriptions, on no account will Club Funds be accepted over the Bar.

12.—In the event of the death of a member, the deceased member's account in full (less departmental expenses) shall be paid over to the next of kin plus a levy of 1s. per member. This will be paid from Club Funds, and deducted from the annual share-out.

13.—Any member of H.M. Forces killed in the execution of his duties is not eligible for death benefit.

14.—Secretary's fee 1/- per member per annum.

15.—One card represents one member only. More than one claim will not be recognised in the case of a death levy.

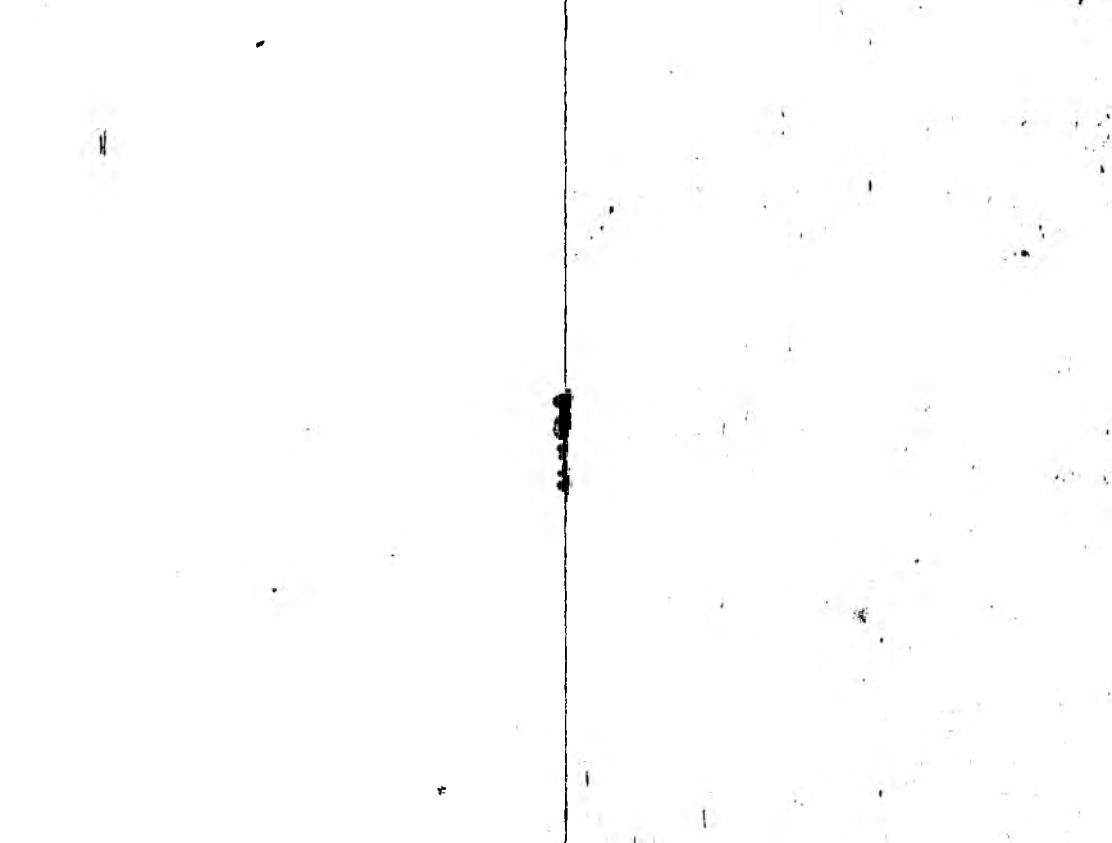
16.—All cheques to be jointly signed by the Chairman, Hon. Treasurer and Secretary.

17.—Every member must attend personally on joining the Club (unless distance prevents him from doing so), in which case a club member only must be responsible for paying the contributions. Anyone unable to attend personally on joining the Club must forward a doctor's certificate, endorsed within the previous 14 days, certifying that the applicant in question is in normal good health and free from any incurable disease. This certificate to be retained by the Secretary. The Committee reserve the right to refuse any application.

18.—Any old member rejoining on share-out night shall be entitled to Death Levy during close of Club—to members signed on only. Fee, 1/-.

19.—The above rules will be strictly enforced, and members are only accepted on the understanding that they decide to abide by the same.

20.—One member in a family is requested to contribute 1d. or more a week to the Christmas Club.



100

100

100

100

100

100

100

100

100

100

2-17-0.

1942	CONS.	FINES	XMAS CLUB	SIG.
July 4				
" 11	7.6	2/- Death		m
" 18				
" 25	5	1/- Bee Tree		m
Aug. 1				
" 8		3/- Gard		
" 15				
" 22	7.6	3/- Hotel		m
" 29				
Sept. 5				
" 12				
" 19		3-140.		
" 26				
Oct. 3				
" 10		Less 26		
" 17				
" 24				
" 31		<u>3.14.6</u>		
Nov. 7				
" 14				
" 21				
" 28				
Dec. 5				
" 12				
" 19				

