

HOME LIFE

November • 1947



ISSUED FOR YOUR INFORMATION AND ENTERTAINMENT BY

NILES FEDERAL SAVINGS AND LOAN ASSOCIATION

302 E. MAIN STREET TELEPHONE 528 NILES, MICHIGAN



security

... a prized possession, sometimes given a person, more often earned through tireless effort and aspiration. Peace of mind, control of material surroundings, provision for the future—these are linked with being secure.

Security for local families has been the aim of institutions like ours since the first savings and loan association was founded over 100 years ago. For in our two constant objectives, savings and home ownership, there is security.

As a local association, we hope to make the attainment of safe, adequate savings and debt-free home ownership easier for the families of our community. Our staff and officers are always glad to assist in any way they can with your thrift and home plans.

James F. Eppenstein, Architect



A low-cost, electrically driven garbage-disposal unit that can be installed in any stand-ard sink—old or new—has been developed.

The cylindrical device is mounted beneath the sink and connected to the drain opening. Waste is fed into it through the drain. Starting and stopping is controlled by an invisible switch; it operates automatically when a cover plate is put over the drain. Removal of drain cover automatically shuts off the machine.

Waste and garbage are chewed and pulverized to a pulp which is carried away by the small flow of water required while the unit operates. The manufacturer claims that the device is simple in design, nonclogging, requires no servicing.

"Daylight" paint colors, designed to lessen eye fatigue for industrial and office workers, have been developed by a manufacturer.

The series of colors compromise four off-shades of white formulated to reduce glare from direct and reflected light, and have been standardized by spectrophotometer records.

Bed model of the "Pre-Piano" can be tilted at a 90-degree angle, pedals are replaced by a bar across the front and strings are replaced by steel spikes. The piano was perfected by the Army Air Corps for use in convalescent veterans Hospitals.

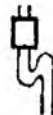
A new shelf helps straighten up the medicine chest, keeps articles for daily use out in front and handy. The device hangs on any cabinet shelf, has four small shelves that each give extra space for one or more toilet items. The metal shelves are finished in ivory enamel.

Photographs can now be printed in—not on—a new glass, which through prescribed use of ultraviolet light and heat, can receive permanent colored prints with three-dimensional effect. Photographic reproductions in this newly patented glass have an ageless quality. They will not fade. Sensitive only to ultraviolet light, the glass does not have to be handled with the care required of photographic paper. There is no "grain" in the design.

A compact television receiver that fits on the average-size end table is being made. The cabinet, 16 inches wide and 22 inches long, tapers from a height of 18 inches in front to 13 inches behind. Picture size is 52 square inches. The set uses a 10-inch cathode-ray tube, can be adapted to standard AM reception. The receiver is finished in blonde or mahogany.

Moulded automobile fender of glass fiber and plastics will be a replacement part for models no longer being made because the dies are not available. Experts say it will be lighter than steel fenders, will not dent or crumple and can be produced at a lower cost.

Ideas FOR BETTER LIVING



ILL TAKE MINE
ON HICKORY



CULINARY DEPARTMENT

Planked hamburgers are claimed to have the same delicate wood flavor hitherto known only in aristocratic planked steaks. Nevada inventor uses pieces of thin veneer wood, putting them between the electric grill or hotplate and the hamburger. Customer may even select the wood flavor he prefers—oak or hickory.

Then there's an electronic, high-frequency induction gadget that will cook any sandwich, including steak, in just eleven seconds. The cold sandwich is placed in a plastic envelope, and thrust between copper coils. In eleven seconds it's cooked.

Coming up—in five years that is—is a coin-in-the-slot machine to cook a meal to order. All the customer will do is to deposit the coin, set the machine for medium, rare, or well-done and wait. Another gadget already being developed will uncup and pour a bottle of soda.

SIMPLE INGENUITY

Simple ingenuity

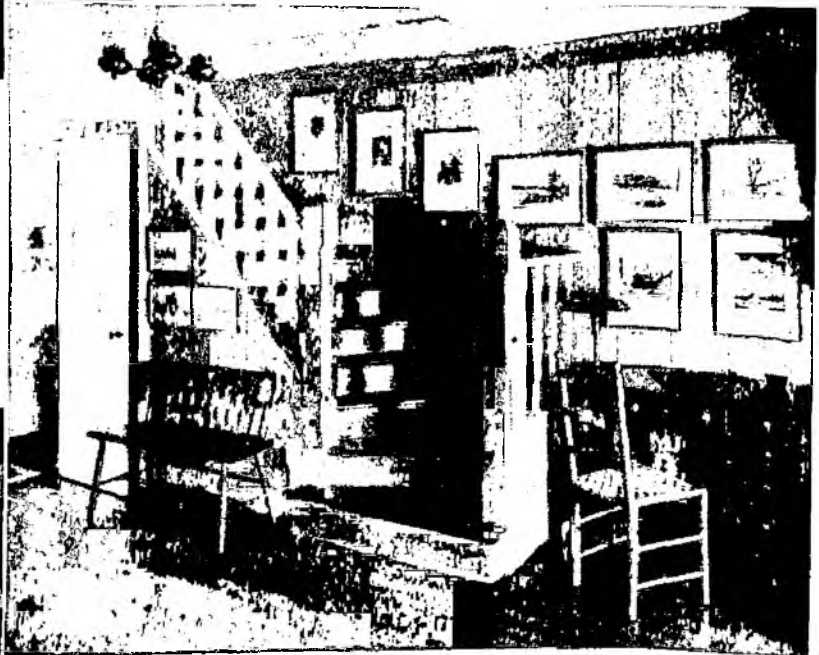


Who would guess that this is a corner in a basement? Wall paper with a stage coach design, captain's chairs and high backed seat are as colonial as the hooked rug on the floor. A tiny fireplace makes the corner warm-as-toast for removing boots and coats when the family comes inside via the garage that's just on the other side of the cobweb doors.

Max Tatch

Simple ingenuity

The Mott Studios



Count them—there are a total of eleven pictures grouped here. Balance, careful selection and similarity of art technique result in a pleasing and unusual effect without a crowded or cluttered look.



Plain but not cold, this hallway with coat closet across one end is made more appealing by the Dutch half-door, the end table and mirror above it, and the bold paper on both walls and ceiling.



EMPHASIS ON **Comfort**

SUE AND WALT ABBOT parked their car and went up the walk to their new home. Evergreen shrubs that had just been set on each side of the *low front stoop* looked very pretty against the *white frame house*.

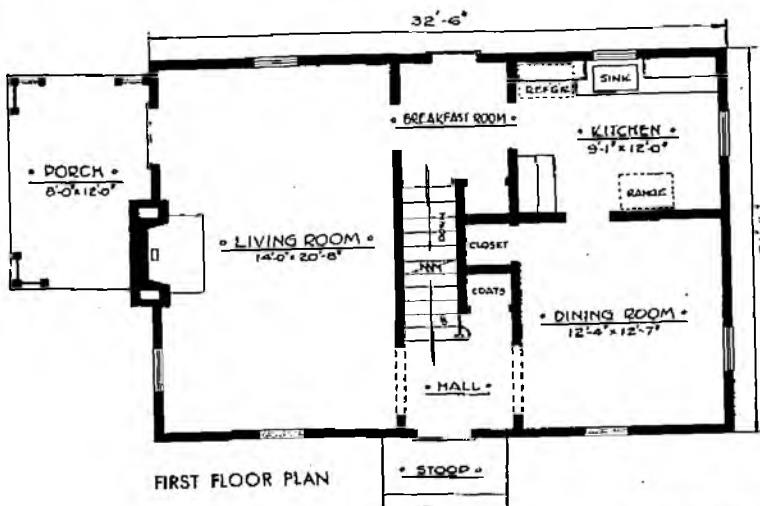
The Abbots hung their wraps away in the *convenient coat closet* that was part of the *hallway*. Sue always thought their *hall with its open stairway carpeted in dark green* gave a warm though dignified entrance to their home.

Walt was in the living room lighting a fire in the *fireplace* as Sue started for the kitchen. On her way through the *dining room*, she hurriedly surveyed the table, already set for family Thanksgiving the next day. She was glad to have that much ready and it wouldn't be disturbed. Tonight just the two of them would have their dinner in the *breakfast room* or on the *sun porch, glassed in* for the winter.

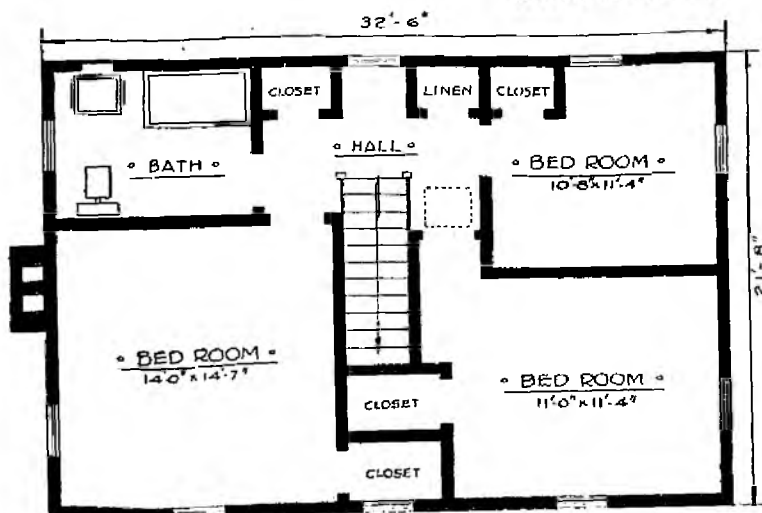
Later, while Sue was washing dishes and looking out the *window above the sink* at the first snow just beginning to fall, she thought about how comfortable she and Walt had been in their new home. *Six rooms with three large airy bedrooms upstairs (and generous closet space)* would probably always be amply large for their family and frequent guests.

Sue was glad, too, that they were financing ownership of their home through their local savings and loan association. They had made a moderate down payment and now each monthly payment, much like rent and planned to fit their budget, was bringing them closer to complete ownership of their home.

Perhaps the home shown here is the one for you and your family. Blueprints for this model are available at our association. Our staff and officers will be glad to talk over with you your plans for a home of your own. Won't you come in soon?



SECOND FLOOR PLAN





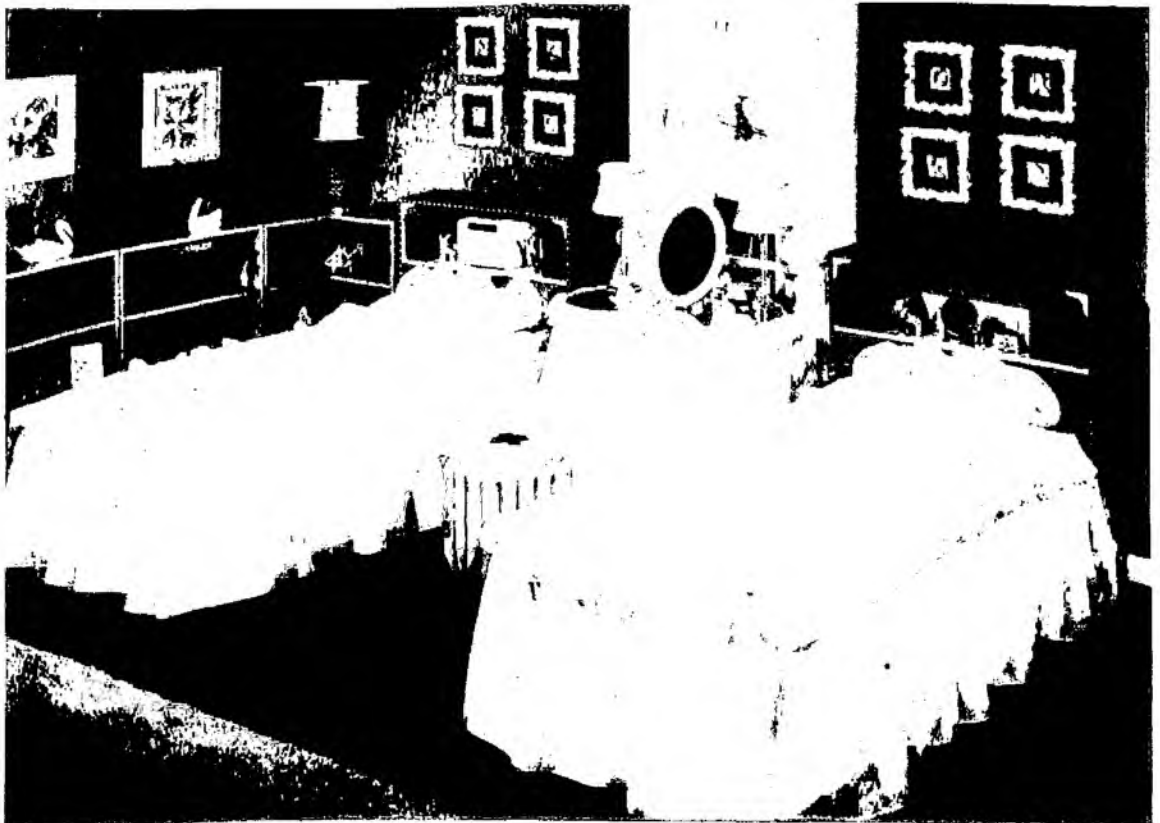
Planned **SHELVES**

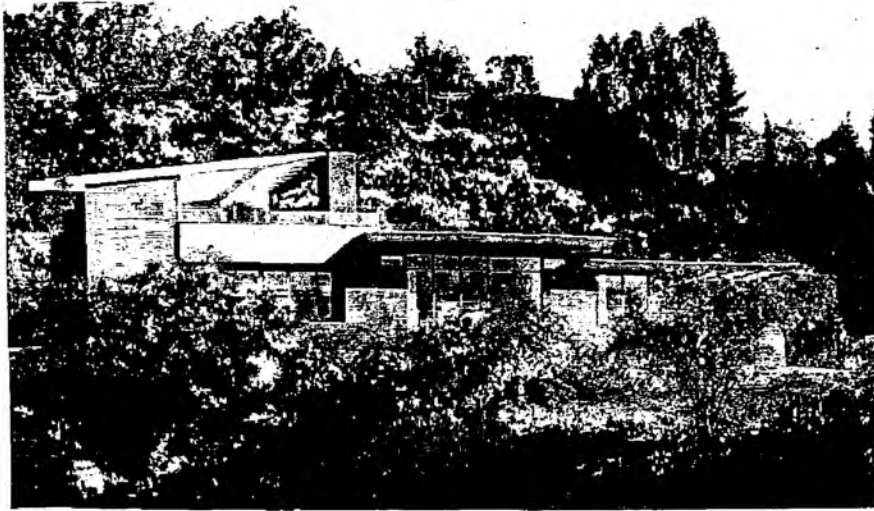
The shelves over the studio couch in above picture and the shelved headboards of the beds in the other are convenient, useful and attractive.

There are all kinds of practical uses to which you can put them. For keeping books handy to read while resting, for listening to the radio while relaxing, or as a vantage spot to put your alarm clock,

they're ideal! These shelves provide extra room, too, for knickknacks and "extras."

If the man of your house is skillful with a saw and hammer, he can probably build some shelves to order with little trouble. Then, follow your own good ideas about staining them, covering with leather, or finishing in some other way.





f unctional

The house is built around a brown-stained concrete paved loggia or roofed open gallery which gives a gradual transition from outdoors to indoors. The stairway leads to a partially roofed sun deck. Living area, dining space, study and three bedrooms have entrances leading off from the loggia.



A brown-stained concrete paved patio leads into the similarly paved loggia. At one end of this simple hallway, cantilever stairs or stairs supported only at one end ascend to the sundeck.

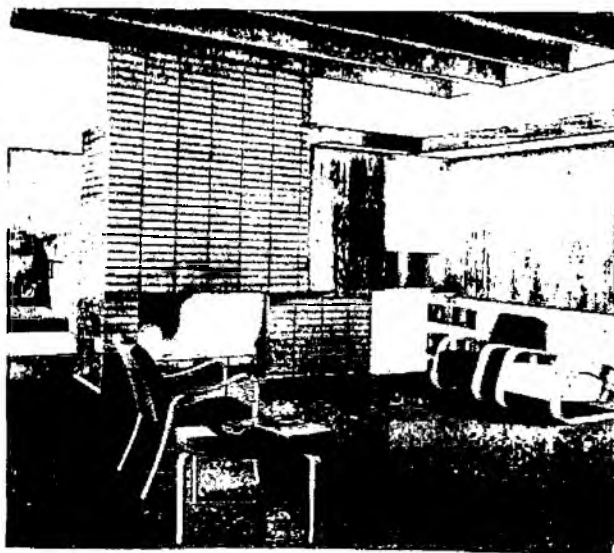


Chartreuse walls, a pale yellow ceiling and prima vera wood counter tops combine to give warmth to the kitchen. Burn-proof clear plastic covers working surfaces. A counter separating kitchen from dining room doubles as a breakfast bar.

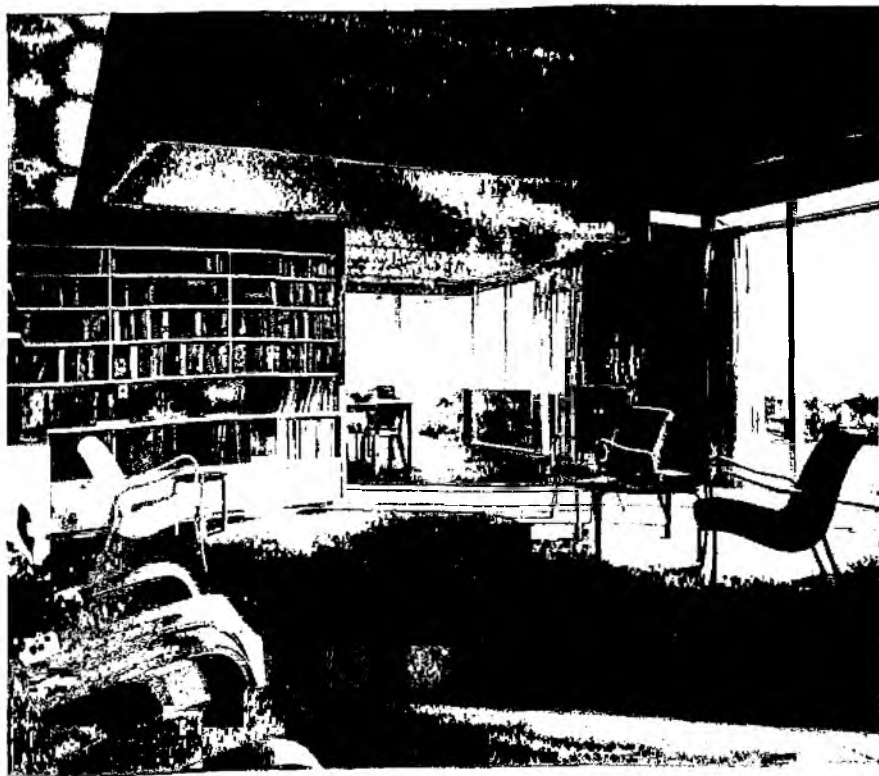
design

Combed plywood is the predominant finish with brick and glass used on the south side of this modern and functional home, designed by Rodney A. Walker.

The house has been planned as an integral part of its surrounding scenic landscape. It has three bedrooms and two baths in addition to the rooms described in more detail on these pages. The house is heated from radiant coils installed in the ceilings.



Twelve-inch tapestry-faced, ruffle brick is laid one above another to keep the lines of the living-area fireplace vertical. At the left of this picture you can catch just a glimpse of the 9 by 18 foot study which has a built-in lounge and closet for doubling as a guest room.



Arts and Architecture

Living and dining areas shown here can be separated if desired by an accordion screen. These rooms are paneled in mahogany plywood with floor covering of warm brown linen carpeting. The living area has 11 foot ceilings and full length windows along one almost entire wall. Abundant shelf space accommodates books and records with closed compartments at the base for magazines.



STEEL

STAIR steps that never creak. Walls that never settle and cause plaster cracks. Exteriors that require no attention for half a century. We're talking about homes made of steel.

Before the war, use of steel in small home construction greatly expanded. The metal's strength—about 15 times that of wood—as well as adaptability and ready supply brought it increasing popularity as a building material. The average home then had more than 6,000 pounds of steel in it; today the figure is around 8,000 pounds and some architects believe the all-steel home will be a common sight in less than a decade.

New Steel Potentialities

New steels have come from the laboratories and important new finishes have been developed. Steel-framing and Quonset hut building types, which won out against other materials for speed of erection, cheapness of construction and livability, have new potentialities.

Mention a prefabricated house and you can see brows frown in the belief that the words mean monotonous uniformity. That's not true—either of a steel or of any other house.

With sound research and proper design, you can have as much variety with prefabricated units as you can with conventional construction.

More than a decade ago steel residences were sprouting up; first as experimental projects, then as proven types. Today there are two schools of thought as to how steel fits in the

housing picture. One holds that steel, although it has proved itself desirable, will only step by step replace conventional materials. The prospective home owner, they say, has wrongly formed the idea that wall panels would pop like the bottom of a pie pan, or that it would be impossible to hang pictures and mirrors and draperies in such a room.

This step-by-step school suggests replacing wood with steel where it can be proved advantageous structurally, economically, and, above all, acceptable to public taste—for instance, such things as steel window casements and windows, steel stairways, steel flooring and steel internal wall members.

Paneled steel floors have been used in industrial building for a decade. The panels are made in uniform width and in lengths to span from one foundation wall to another—up to 20 feet, longer than is usually reached in residences by wooden floor joists. Light, surprisingly strong and quick to install, the panels can be welded or bolted to steel plates atop the foundation. Once in place and properly prepared, linoleum, wood or any other type of flooring can be laid down.

Steel Floor Advantages

Such a floor is only inches thick instead of the conventional foot or more. That means walls won't have to be built as high—six inches saved in floor thickness, for example, means six inches less in wall height.

And six inches less masonry around a residence for every floor would be a big saving in material and labor cost. It's also incombustible. No rat can gnaw himself a home in such a floor and termites could pound their proboscides against it forever without success. Add to this the finished paneled ceiling that results from the smooth underside and you've eliminated unsightly, dirt-catching beams—a boon to basement rumpus rooms. On upper floors, paneling can be papered, plastered or painted for individual tastes.

Flexible Rooms

Steel framing for a house is another item. Steel house framing would do away with the two-by-fours inside your walls. There are many designs on the market, but most of them are made from strips of thin steel formed into shape and fabricated into panels from sixteen inches to three feet in width and of wall height. They interlock, or are bolted or welded together, and a whole side of a house can be raised at one time. Window and door units can be put in between any two, and the interchangeable sections make all sorts of room sizes or arrangements.

Onto these steel frames you can attach any material that suits your fancy; brick, stone or wood walls on the outside, and metal lath and plaster, wallboard or other conventional finishes on the inside. Some kinds can be nailed into with ordinary nails, others take the common metal

fasteners and sheet metal nails found in every building supply house. Like the floors, they've rat proof and vermin resistant, and they're easy and quick to install. An untrained crew once put up the framework for a whole house in 144 man hours, equivalent to ten men erecting a residence in a little over a day and a half's normal working time.

Once erected, the steel framing offers great rigidity and permanent proof against sagging. Plaster cracks in the wall, an annoying item of re-

HOUSES

pair, are eliminated. In combination with metal lath and steel floors, steel framing eliminates two-thirds of the combustible material in a home.

This school of thought also recommends bathrooms with porcelain enameled iron or steel panels. Even kitchen ceilings and walls can be made of this material, whose sparkling color never fades and whose tough, gleaming surface stands up under abrasive wear. As proof of what the material can take, porcelain enameled coal chutes last longer than regular steel ones.

Bathtubs and shower stalls can be made part of the wall by first stamping the shape out of iron or steel, then porcelain enameling. Even

porcelain shingles for roofs are made. Their higher cost in comparison with slate or tile is offset by their almost limitless life and light weight, which makes unnecessary heavy (and expensive) roof supports.

The other school of thought says it's wrong to introduce steel gradually by replacing wood or other materials for floors, walls and roofs. Steel has qualities all its own. Why not start with a clean slate and design a steel house from top to bottom, capitalizing on steel's advantages?

The reason steel houses haven't been popular in the past, say proponents of the newer school, is because they haven't been properly designed. Problems of heat transfer through the walls, moisture condensation from temperature changes, echoing of sounds and other difficulties can be eliminated by proper design utilizing present day architectural and engineering knowledge. Units can be designed to give a steel interior and exterior wall surface, proper insulation, and all desirable strength and beauty. By utilizing steel's adaptability to mass production, it should be possible to produce an entire house with all its necessary equipment in a moderate price range.

Light Steel Specifications

Specifications for light steel construction, issued by the American Iron and Steel Institute, provide specific information on what lightweight steel will and will not do. Heretofore, use of such materials was rule of

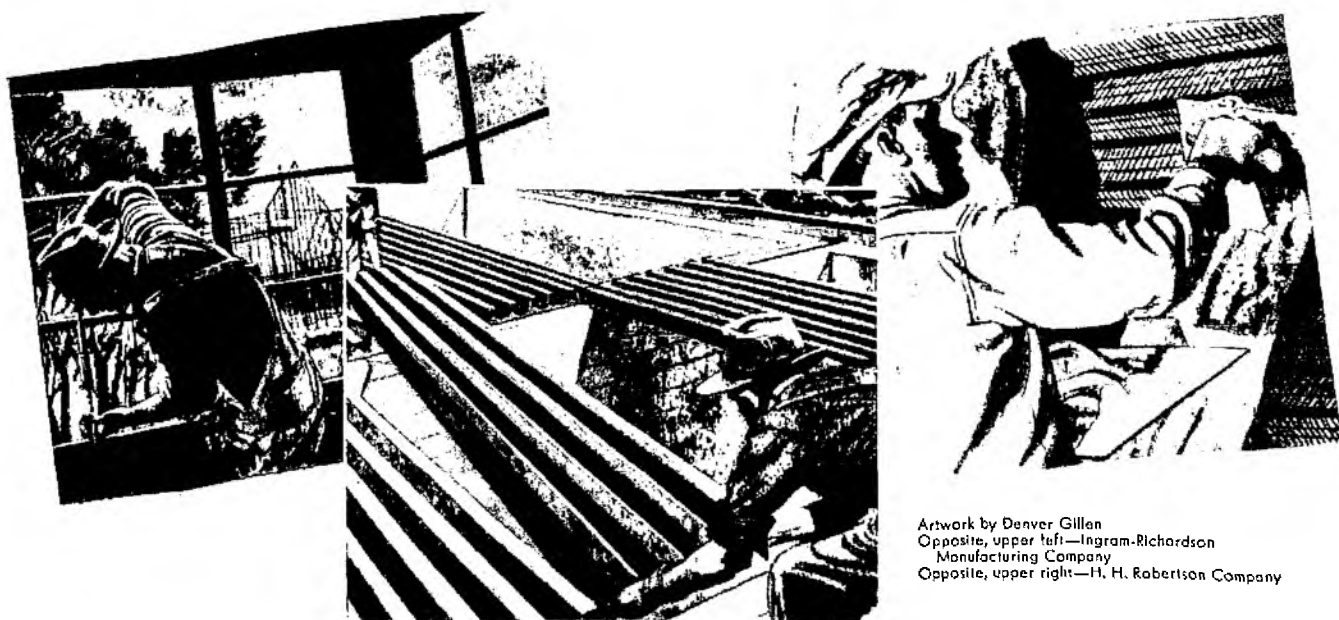
thumb—try a piece and if its stands up, swell. Now architects and home builders can know in advance what loads a lightweight steel member will sustain. The specifications will not only help them, but can be considered in revamping building codes.

Finishing Possibilities

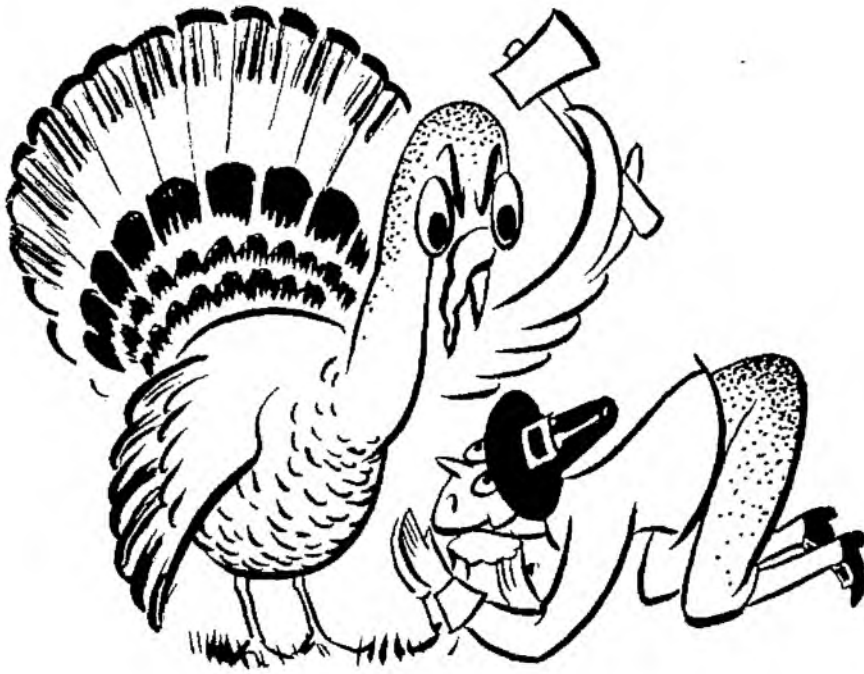
Hanging pictures in an all-steel home, these advocates contend, isn't any problem. A built-in molding at the top of the panel and picture wire is one way of solving the problem. If you don't like picture wire hanging down, drill a hole to put in hangers—you can't hang a picture in a plaster wall without making a hole, either.

Steel offers all sorts of possibilities in finishing. It can be printed to look like wood, covered with coatings that give it the appearance of plaster, or bonded to various materials. Thin wooden veneers can be applied, and a tapestried surface can be obtained by rolling cloth onto the metal during the manufacture of sheet steel. Plastic coated steels have been developed which promise to have their brand-new appearance after years of weathering. Such steels could be formed into pleasing patterns for house exteriors; the others for interior surfaces.

But why do so, ask proponents of the second viewpoint. The finishes don't add to steel's structural advantages for residence construction, merely add to the price and steel has an inherent beauty.



Artwork by Denver Gillen
Opposite, upper left—Ingram-Richardson
Manufacturing Company
Opposite, upper right—H. H. Robertson Company



ALL IN FUN

Wanted—a woman's purse with a zipper at the bottom—that's where they always have what they need.

In a phone call to the editor of a local newspaper, a man explained that his uncle had been a regular subscriber for half a century. "He's always been a model of propriety—doesn't smoke or drink; never uses strong language and hasn't ever been to a theater or the cinema," the nephew explained. "In fact, my uncle has absolutely no vices or excesses. And he's going to celebrate his 80th birthday tomorrow."

"How?" asked the editor.

Diner: I'll have the dollar dinner, please.

Waitress: On white, or rye?

Remember that there is nothing stable in human affairs: therefore avoid undue elation in prosperity, or undue depression in adversity.

12

BOOKWORM—(1) A person who would rather read than eat. (2) A worm who would rather eat than read.

Waiting for a train in the Akron Railroad station, I was approached by a small boy who couldn't have been more than six years old.

Barely visible behind a huge "Shoe Shine—10c" box, he looked up and asked, "Shine, lady?"

"How long have you been a shoe shiner?" I asked.

"Oh, about two years."

"And what were you before that—a bum?" I joked.

"Naaah," he retorted contemptuously, "I was a PLAYBOY!"

Two little boys were bragging about the relative accomplishments of their respective dads. One appeared to have an edge when he insisted, "My father's an Eagle, an Elk, a Moose and a Lion." "Yeah?" responded the incredulous companion. "How much does it cost to see him?"

Of the hundreds of yarns told by and about Mark Twain, our own favorite is about the time he tried to borrow a book from a neighbor.

"You're welcome to it, but I must ask you to read it here. I make it a rule never to let any book go out of my library."

A week later the neighbor wanted to borrow Mark's lawn mower.

"Certainly, certainly. You're welcome to it. But I must ask you to use it here—I make it a rule."

The best substitute for success is to go off some place where no one knows you and pretend that you amounted to something where you came from.

This fellow was really down—his shoes were so thin he could step on a dime and tell whether it was heads or tails.

A frequent litigant meeting his attorney on the street said, "It's a fine morning, isn't it?"

Then suddenly aware of what it had cost him in times past to get an opinion from this same lawyer, he hastily added, "Remember, now, I'm telling you, not asking you!"

Judge: Well, Sam, I see you're back for fighting with your wife. Liquor again?

Sam: No sah, jedge, she licked me dis time.

Teacher: Who can tell me the name of the first man and the first woman.

Boy: Adam and Evil.

"OCTOBER: This is one of the peculiarly dangerous months to speculate in stocks. The others are, July, January, September, April, November, May, March, June, December, August and February."

First person: Dull party, isn't it?

Second person: Sure is.

First person: Let's beat it.

Second person: Can't. I'm the host.



Winter Worries

AND HOW TO AVOID THEM

Let's stop in at the Johnsons and see what the family is doing. Mr. Johnson is in the basement, old hunting shirt and cap on, struggling with the storm windows. One of them is broken and, what's worse, the hired man who took them off last spring, failed to number or key them as to which belonged where.

There's a new steel bracket that hangs storm windows and screens for storage, prevents glass breakage and warping. The device can be screwed onto a ceiling beam and has curved hooks on which screens or windows are suspended by their frames. Hanging can be in either a vertical or a horizontal position. The brackets are boxed in a set of four, enough to hold 21 windows or screens.

Of course, the hired man could have followed any of a variety of systems for keeping the storm windows (or summer screens, if that had been the case) in order as to proper location, as any home owner could have told him. By giving duplicate numbers to the storm window and the window to which it belongs or by marking the storm windows according to proper location, he could have

avoided all trial-and-error placement when the time came to replace them.

In the living room, Mrs. Johnson has decided it's a perfect day for a cheery fire in the fireplace—and so has proceeded to light the kindling wood for the logs she's brought in from under the porch. It's probably a very pretty blaze, but Mrs. Johnson can't even see it. The draft is stuck and won't open and the smoke is definitely not going up the chimney.

After this, Mrs. Johnson will check or have someone check for her to see that the draft will open and that the fireplace is in working order. Next time she starts a fire, chances are she'll hold a lighted newspaper in the fireplace but away from the logs and see if the draft draws the flames up.

Upstairs, Auntie is concerned about the wear and tear the blankets are getting. The most wear and soil seem to come on the part of the blanket that tucks under the chin and over the shoulders. Many an otherwise clean blanket goes into the washtub or out to the cleaners only because of grease spots or a dingy look along its upper edge.

For extra protection from soil and handling, it's suggested that a strip of some soft washable fabric or even a strip of soft sheeting in a color the same as or attractive with the color of the blanket or comforter, be basted over the top. This strip can be removed and washed when soiled and then easily replaced. Or some housewives prefer a full-length blanket cover, long enough to fold in over the top of the blanket. Making the bed with a long top sheet that folds well down over the blankets, also protects against soil.

In his room, young Tommy Johnson has had a sudden realization that his funds for Christmas shopping are not as abundant as he had hoped. Counting the days between now and December 25th, and mentally cutting all expenses Tommy is not quite certain how he'll manage.

Tommy is learning the value of saving for the future the hard way. Our association is here to make the thrift habit easy for people of our community. We offer a number of plans for individual purposes and budgets. Liberal dividends are paid you for your funds saved with us. You are assured of safety for your funds as they are invested largely in first mortgages on local homes. Plan ahead to avoid savings worries.



CROCHETED SHORTIE GLOVES

PLAIN OR STRIPED

Medium Size—Striped

Materials Required: Cotton Crochet Thread

5—50 Yd. Balls White.

1—50 Yd. Ball Red for striped Glove or 6—50 Yd. Balls White if all White Glove is made.

Steel Crochet Hook No. 6.

Gauge—5 patterns=1 inch.

Back of Glove. With White, ch 73, s c in 2nd st from hook, * ch 1, skip 1 st of ch, s c in next st of ch, repeat from * to within the last 7 sts of ch, 1 s c in each of the last 7 sts, ch 1, turn.

2nd Row. 1 s c in each of the next 7 s c picking up the back loop of st only, (this is the cuff and is worked in back loop of st only in each row throughout) s c in next s c picking up both loops of st, * ch 1, s c in next s c, (pattern) repeat from * to end of row, ch 3, turn.

3rd Row. S c in 1st s c, ch 1, insert needle in next s c, pull loop through, then with Red complete the s c, carry the White underneath and continue working in Red, * 1 s c in ch 1, 1 s c in next s c, repeat from * to the cuff, break Red, then with White work 1 s c in each of the last 7 s c working in back loop of st only, ch 1, turn.

4th Row. 1 s c in each of the 7 cuff sts picking up the back loop of st only, 1 s c in next st picking up both loops, * ch 1, skip 1 s c, s c in next s c, repeat from * to end of row working last s c in end ch, ch 2, turn.

5th Row. Skip 1 s c, s c in next s c, * ch 1, s c in next s c, repeat from * to cuff working 1 s c in each of the last 7 s c, ch 1, turn.

6th Row. 1 s c in each of the next 7 s c, 1 s c in both loops of next s c, * ch 1, s c in next s c, repeat from * 20 times, then ch 28 for next finger, turn.

7th Row. Work down on ch same as 1st row, then work in pattern to cuff working the 7 cuff sts same as previous row, ch 1, turn.

8th Row. 1 s c in each of the next 7 s c, then work even in pattern to end of row, ch 3, turn.

9th Row. Work even in pattern to cuff, 1 s c in each of the last 7 s c, ch 1, turn.

10th Row. 1 s c in each of the next 7 s c, then with Red and carrying the White underneath work 1 s c in each s c and 1 s c in each ch 1 to within 2nd pattern from top break Red, with White finish row in pattern st working last s c in the ch 3 at top of finger, ch 2, turn.

11th Row. Skip 1 s c, s c in next s c, * ch 1, skip 1 s c, s c in next s c, repeat from * to cuff working cuff same as previous row, ch 1, turn.

12th Row. 1 s c in each of the next 7 s c of cuff, then work even in pattern to end of row, ch 2, turn.

13th Row. Skip 1 s c, s c in next s c, then work even in pattern to cuff, 1 s c in each of the last 7 s c, ch 1, turn.

14th Row. 1 s c in each of the next 7 sts, 1 s c in next st picking up both loops of st, * ch 1, s c in next s c, repeat from * 20 times, then ch 30 for next finger, turn.

Repeat the 7th, 8th, 9th, 10th, 11th, 12th and 13th rows, ch 1, turn.

22nd Row. 1 s c in each of the next 7 sts, 1 s c in next st picking up both loops of st, * ch 1, s c in next s c, repeat from * 20 times, then ch 28 for next finger, turn and work next 7 rows same as last finger, ch 1, turn.

30th Row. 1 s c in each of the next 7 s c, then work 14 patterns, ch 22 for thumb, turn.

31st Row. Work on ch same as other fin-

gers, then work 2 patterns on hand part of glove, sl st in next s c, ch 2, turn.

32nd Row. Skip the sl st, s c in next s c, then work in pattern to top of thumb, ch 3, turn.

33rd Row. Work in pattern down thumb, ch 1, sl st in sl st, then work 1 pattern on hand part of glove, ch 1, sl st in next s c, ch 2, turn

34th Row. Same as 32nd row but working a pattern in the ch 3 at top of thumb, ch 2, turn.

35th Row. Skip 1 s c, s c in next s c, then work same as 33rd row.

36th Row. Same as 32nd row but ch 2 to turn at top of thumb.

37th Row. Skip 1 s c, s c in next s c, then work even in pattern down thumb and remainder of hand section working 1 s c in each of the 7 sts of cuff, ch 1, turn.

Next Row. 1 s c in each of the next 7 sts, then work in pattern around entire thumb and around each finger working down opposite side to cuff, 1 s c in each of the last 7 s c, break thread.

Under Section. Work in same manner omitting the Red s c row in center of each of the 4 fingers but working that row and all rows in pattern st same as other row. Place the two sections together and using the pattern st crochet the 2 sections together, but working 1 s c in each of the 7 s c at each side of cuff.

Work other glove in same manner.

If all white glove is desired work all sections same as undersection of striped glove.

ABBREVIATIONS

ch.....chain
s c.....single crochet
st(s).....stitch(es)
sl st.....slip stitch

*[asterisk]—When this symbol appears, continue working until directions refer you back to this symbol

Time: When the wind is whistling outside the window.

Place: Beside a crackling fire in your fireplace.

Action: Not much—just you, curled up in an easy chair with a good book.



It's a cozy plot and one that can't be repeated too often for the person who likes to read and who has a carefully selected, if not extensive, library. A collection of fine books is a valued possession to its owner. But books will last through the years only with careful handling and cleaning. Here are a few hints to keep your books in trim.

When dusting books, a soft, dry, clean cloth or the soft brush attachment of a vacuum cleaner should be used. Dusting should be done away from the binding, not toward it. Dust that has sifted down between pages of the book may be removed by carefully flipping the pages several times. Never hit books together to remove dust as this loosens the binding.

Leather bindings often dry out in the hot atmosphere of a home. To keep them soft and pliable, you can work in a small quantity of lanolin or castor oil with the hands, especially along the back binding. Then wipe the leather with a soft clean cloth. Avoid using mineral oil—it will rot leather.

Of course, if it's possible, books keep best in tightly closed cases, away from dust, moisture, and extreme dryness and heat. Bookshelves should be located where sunlight from windows does not shine on their contents as this may fade the colors of the bindings. Don't crowd your bookshelves, and stand the books straight on the shelves (never at an angle) and well to the front so there will be a free circulation of air around them. Try to prevent having books pulled from a shelf by the binding.

There's a correct way to open a new book to insure its usefulness and good condition. Place the back of the binding on a flat surface with the fore edges up. Open the front cover first and then the back cover. Next

open a few pages at a time, alternating from back to front. Press gently with the fingers along the inner margins of the book until the center is reached.

An easy way to repair torn pages is simply to cut a strip of transparent mending tape a little longer than the length of the tear and carefully apply it to the page, seeing that the edges of the tear meet. Professional bookbinders use rice paper a great deal

paper on each side of the page and press the book closed with a heavy weight.

There is a product on the market which can be applied to bindings and bookshelves to effectively prevent mildew. It does not damage the materials and it is not toxic to human beings or animals. Should mildew have already started, prompt treatment is necessary to avoid spreading. Brush off the spots with

FIRST AID FOR Books

for mending books. Rice paper is both thin and tough. To use it for repairing tears, apply thin paste to the edges of the rip and lay a piece of rice paper over it cut to proper size. Smooth it down carefully to prevent puckering. Lay a piece of waxed

a clean soft cloth and then go over them with a cloth slightly dampened with denatured alcohol. You owe it to yourself to survey regularly your bookshelves and packing cases or trunks containing books to look for needed repairs or cleaning.

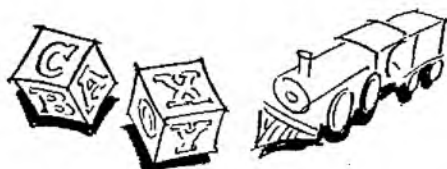


Max Tatch

CHEERFUL and attractive, the junior bedroom and infant nursery pictured here, take their color cue from the dominant colors in the parachute jumper decal decorations. Lush pinks and blues, in varying degrees of intensity, plus deft touches of white and yellow, all combine for a charming decorative effect. The present trend toward clear vibrant colors in modern living room accessories is enjoying wide acceptance in the juvenile decor. Draperies and floor coverings do not necessarily have to be muted pastels. Moreover, the idea that nursery walls must be painted white no longer prevails. In fact, today's homemaker is not hesitant about employing colors more

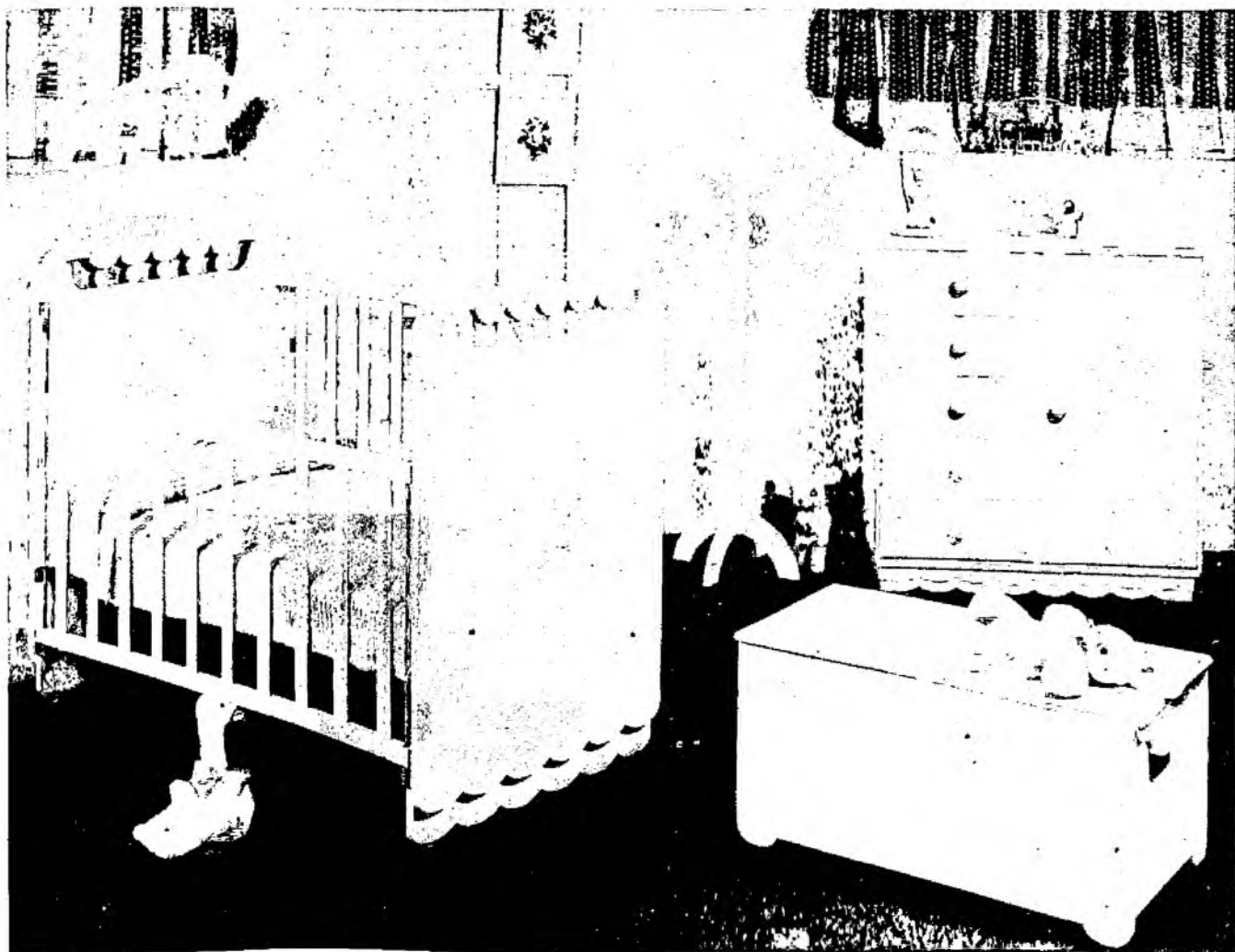
lavishly and the results are refreshing. Using the delicate pastels as a nucleus for the color scheme, the deeper hues are introduced as a dramatic accent.

The walls of the junior bedroom shown on this page are a bright blue paint—a fine background for the rich honeyed tones of the birch pieces. The scallop trim of the furniture is repeated very effectively by white painted scallops framing the window. The draw draperies, so practical for children's rooms, are a rich rose; the carpeting a deeper rose with a large white oval chenille rug at the foot of the bed. For an air of individuality, and incidentally, a means of self-expression for the home decorator, an



Matching Junior





Lullabye Furniture Corporation

and Baby Bedrooms

amateur crayon sketch of the parachute jumper decal hangs over the bed. *Scallops painted on the wall, outline the frame.

The bedspread is white chenille with a large blue and pink bow worked in the center. White pottery lamp bases with pink painted bows repeat the design in the spread. Pleated washable lamp shades match the pink in the parachute.

Shown in honey birch, this group is also available in white enamel; both equally attractive and the practical sturdy kind of furniture that can be handed down to a younger child. Styled after the manner of grown-up furniture, all the case pieces of the juvenile ensemble will serve for many years. The dresser, with four drawers, and the five-

drawer chest are completely dust-proof, dovetailed and with center guide. The 69 inch youth bed has removable safety rails.

White enamel is featured in four matching furniture pieces of the infant nursery, shown above. Pink wallpaper, with blue, yellow and white figures, decorates the walls. The woodwork is pink enamel. Besides being decorative, the deep window sills hold a collection of cuddly toys. The glass curtains are self figured jonquil yellow. A honey beige rug, slightly deeper than the perky little bunny, covers the floor. The bedspread is pale blue—the tufting a deeper blue, pink and yellow. The lamp is a delft blue with an opaque blue shade. For easy accessibility, and an inducement for the youngster

to put his playthings away, the toy chest is placed in a prominent spot. The solid panel, six-year size crib is equipped with variable position spring and finger-tip control drop-side. The drawer pulls and decorative ball trim are alternate pink and blue. Generous in size, the chiffonette drawers are completely dust-proof—the wardrobe section holding garments up to 37 inches long. The layette chest provides ample storage space for books and toys. This group comprises the basic pieces of a complete matched juvenile ensemble, additional units of which can be purchased "open stock" fashion. The matched ensemble idea in juvenile furniture is especially adaptable where there is a need to use both a crib and youth bed in one room.



Giving Thanks

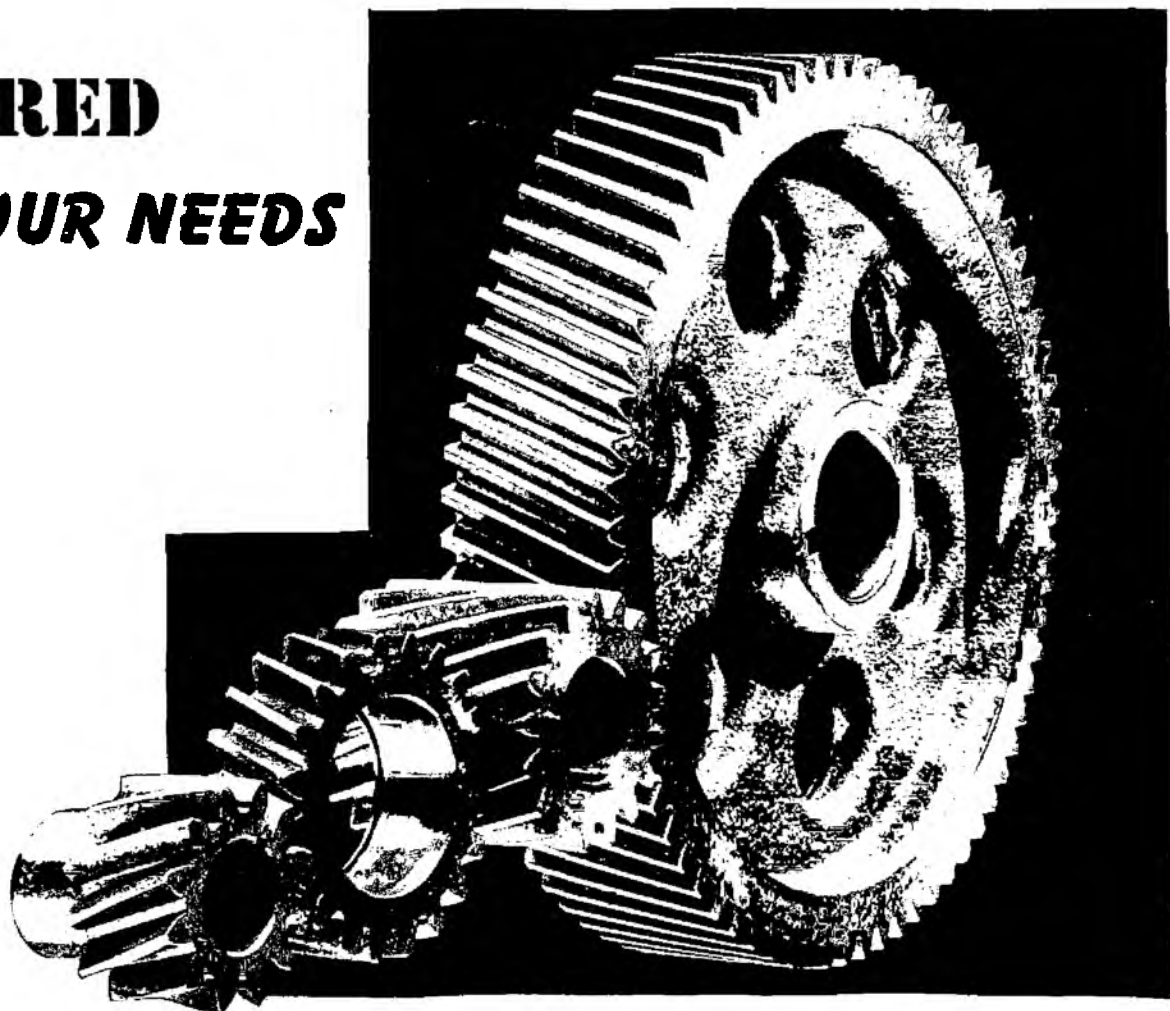
*For the hay and the corn and wheat that is reaped,
For the labor well done, and the barns that are heaped,
For the sun and the dew and the sweet honeycomb,
For the rose and the song, and the harvest brought home—
Thanksgiving! Thanksgiving!*

*For the trade and the skill and the wealth in our land,
For the cunning and strength of the workingman's hand,
For the good that our artists and poets have taught,
For the friendship that hope and affection have brought—
Thanksgiving! Thanksgiving!*

*For the homes that with purest affection are blest,
For the season of plenty and well deserved rest,
For our country extending from sea to sea,
The land that is known as the "Land of the Free"—
Thanksgiving! Thanksgiving!*

Anonymous

GEARED TO YOUR NEEDS



● You know better than anyone the kind of home that will most comfortably suit *your* family. You know, too—or if desired we'll be glad to help you determine—what part of your income to assign to home ownership.

Let our association show you how to best attain the home you want. With our home loan plan, you make only a moderate down payment before occupancy. The remainder is met through monthly rent-like payments.

Our association is conveniently near-at-hand to give any counsel requested. Start your home ownership program now with our budget-plan.

HOME OWNERSHIP is one of the most permanent and worthwhile investments of a lifetime. Enjoy the comfort and security a home of your own can bring you and your family.

Ask us about our local home financing program with its practical monthly payments that are about the same as rent. Your inquiries are welcome at our association office.



NILES FEDERAL SAVINGS AND LOAN ASSOCIATION

302 E. MAIN STREET TELEPHONE 528 NILES, MICHIGAN



Return Postage Guaranteed
NILES FEDERAL SAVINGS AND
LOAN ASSOCIATION
302 E. Main Street Niles, Michigan
"Postmaster: If addressee has removed, notify
sender on Form 3547 postage for which is guar-
anteed."

Sec. 562, P. L. & R.
U. S. POSTAGE

PAID

Niles, Michigan
Permit No. 153

W. A. Stanner
541 Oak Street
Niles, Michigan



ALL'S WELL!
With Safe Savings

But more reassuring than the call
of the old town crier is your knowl-
edge of safe investments for your
family and your future!

Safe investments are our business
—and long-term profitable savings
for our savers are our record. Invest
any amount you can afford, and
watch it grow with profitable earn-
ings—until you need it.

Your sense of well being comes
from the fact that here savings dol-
lars are safe, profitable and ready
for your use when you need them.



**NILES FEDERAL SAVINGS AND
LOAN ASSOCIATION**

302 E. MAIN STREET TELEPHONE 528 NILES, MICHIGAN

